

(1) WALLS:- INSULATION IN CAVITY

Open - Perforated steel lintel
(Dense blockwork)

XT - CTPIR - 1.22 - Rev 3 - Lintel

THERMAL PERFORMANCE
CHECKLIST
(TICK ALL)

ENSURE CT/PIR IS SECURED
FIRMLY AGAINST INNER LEAF
OF CAVITY WALL

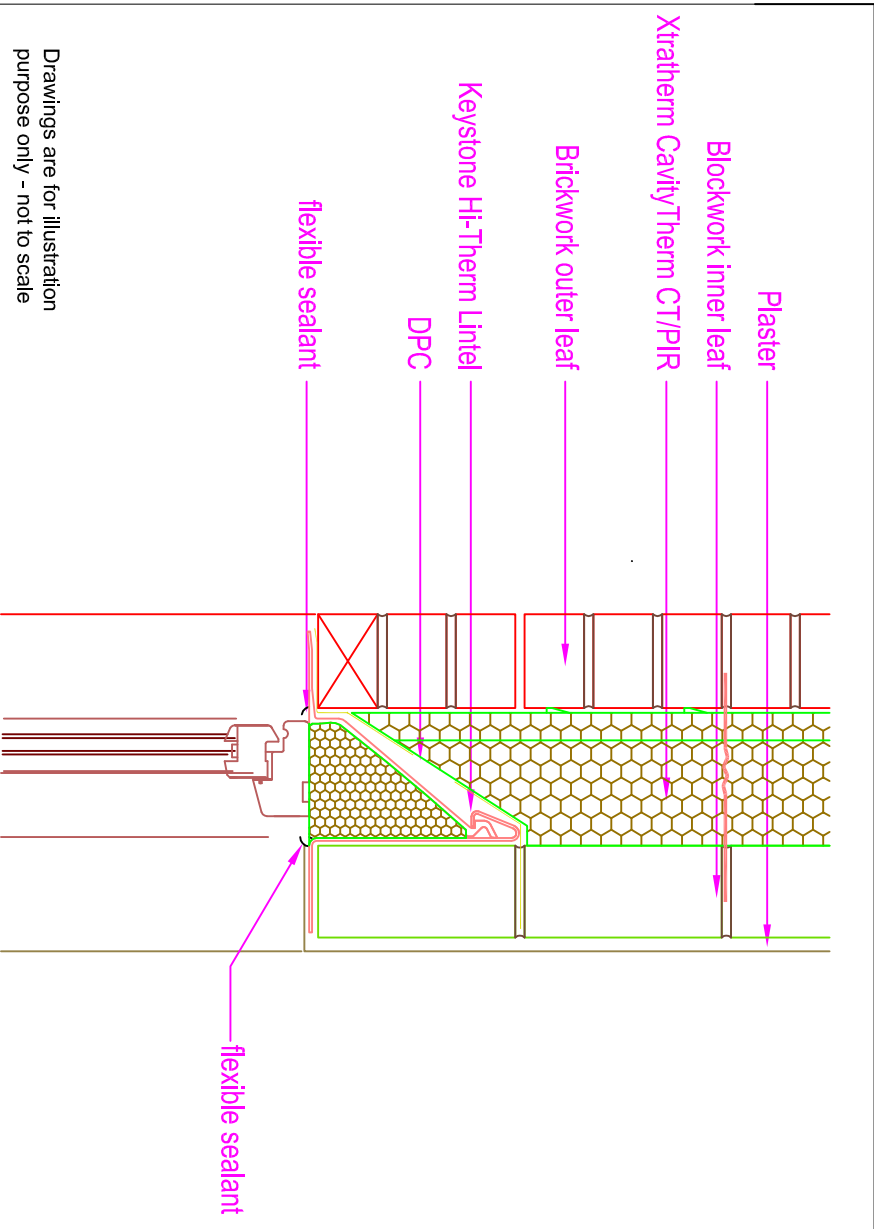
KEYSTONE HI-THERM
INSULATED LINTEL TO BE
USED

AIR BARRIER - CONTINUITY
CHECKLIST
(TICK ALL)

SEAL ALL PENETRATIONS
THROUGH AIR BARRIER USING
A FLEXIBLE SEALANT

APPLY FLEXIBLE SEALANT TO
ALL INTERFACES BETWEEN
INTERNAL AIR BARRIER AND
WINDOW/DOOR FRAME
MEMBERS

Xtratherm



Drawings are for illustration
purpose only - not to scale

GENERAL NOTES

Keep cavities clean of mortar spots and other debris during construction

Cavity/Therm CT/PIR	100mm	125mm	150mm
Psi Value ψ (W/mK)	0.035	0.038	0.044
Temperature Factor (f)	0.932	0.948	0.945
U-Value (W/m ² K)	0.20	0.16	0.13



NSAI

CERT No.: IAB/TM/01

Thermal Modelers Scheme

To be read in conjunction with the Acceptable Construction Details
Any changes to the above construction may change the calculated values