

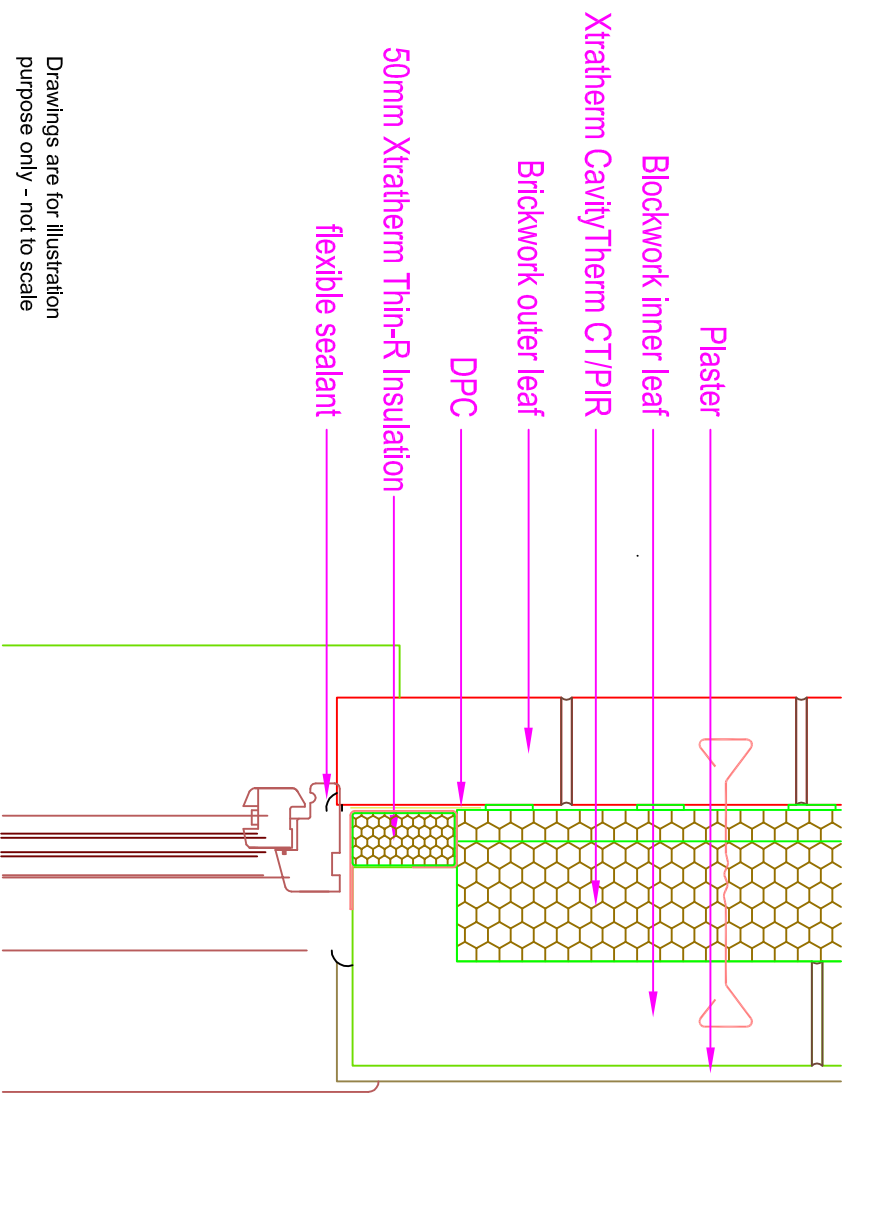
THERMAL PERFORMANCE

CHECKLIST
(TICK ALL)

ENSURE CTP/PIR IS SECURED FIRMLY AGAINST INNER LEAF OF CAVITY WALL

ENSURE 50mm THIN-R INSULATION IS INSTALLED TO CLOSE THE CAVITY

Xtratherm



Drawings are for illustration purpose only - not to scale

AIR BARRIER - CONTINUITY

CHECKLIST
(TICK ALL)

SEAL ALL PENETRATIONS THROUGH AIR BARRIER USING A FLEXIBLE SEALANT

APPLY FLEXIBLE SEALANT TO ALL INTERFACES BETWEEN INTERNAL AIR BARRIER AND WINDOW/DOOR FRAME MEMBERS

IF A PROPRIETARY CAVITY CLOSER IS USED, WHEN FORMING THE AIR BARRIER TO THE WALLS WITH A BLOCKWORK INNER LEAF OR A SCRATCH COAT ON BLOCKS, INSTALL A FLEXIBLE SEALANT BETWEEN THE CAVITY CLOSER AND THE BLOCKWORK WALL

GENERAL NOTES

Keep cavities clean of mortar spots and other debris during construction



NSAI

CERT No: IAB/TM/01
Thermal Modelers Scheme

| | | | |
|---|--------------|--------------|--------------|
| CavityTherm CT/PIR | 100mm | 125mm | 150mm |
| Psi Value ψ (W/mK) | 0.020 | 0.025 | 0.030 |
| Temperature Factor (f) | 0.964 | 0.963 | 0.961 |
| U-Value (W/m ² K) | 0.20 | 0.16 | 0.13 |

To be read in conjunction with the Acceptable Construction Details
Any changes to the above construction may change the calculated values