

THERMAL PERFORMANCE
CHECKLIST
(TICK ALL)

Xtratherm

AIR BARRIER - CONTINUITY
CHECKLIST
(TICK ALL)

ENSURE CTP/IR IS SECURED FIRMLY AGAINST INNER LEAF OF CAVITY WALL

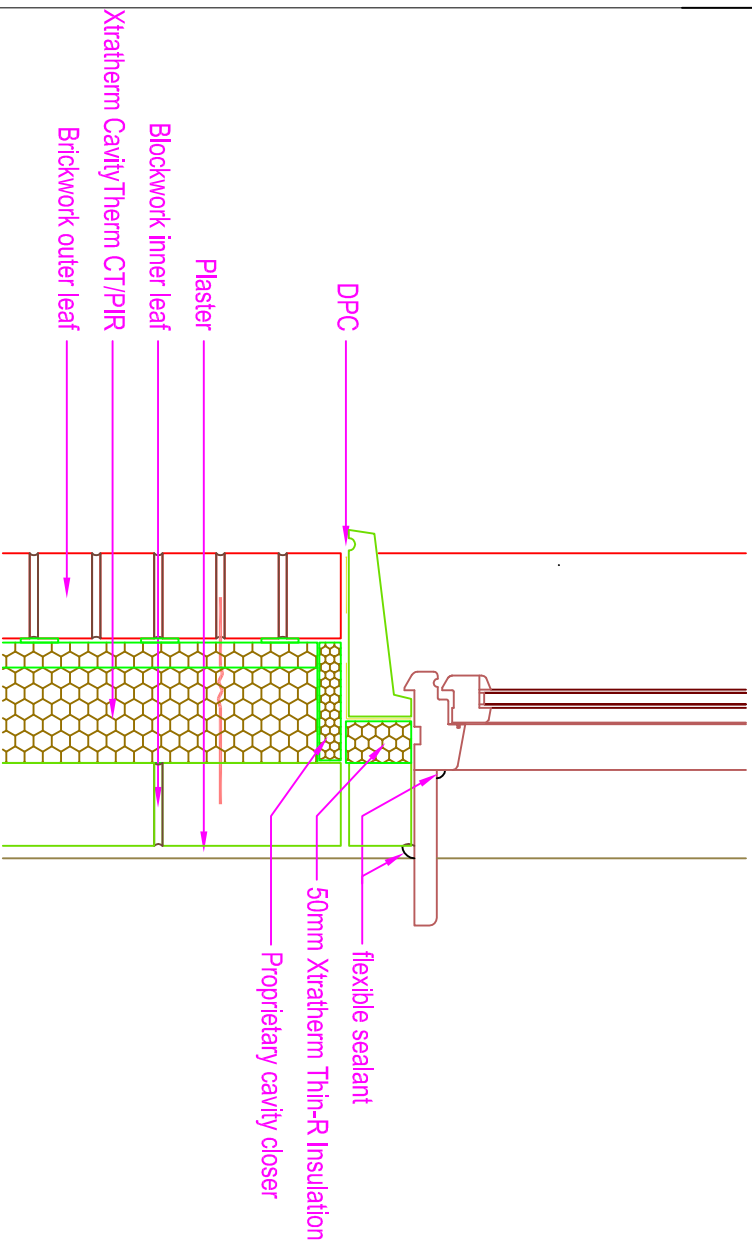
SEAL ALL PENETRATIONS THROUGH AIR BARRIER USING A FLEXIBLE SEALANT

INSTALL PROPRIETARY CAVITY CLOSER WITH MINIMUM THERMAL RESISTANCE THROUGH THE CLOSER OF NOT LESS THAN 0.45 M²K/W

APPLY FLEXIBLE SEALANT TO ALL JUNCTIONS BETWEEN PLASTER/PLASTERBOARD AND SILL BOARD, AND BETWEEN SILL BOARD AND WINDOW FRAME.

ENSURE MINIMUM 50mm THIN-R INSULATION INSTALLED BEHIND SILL

ENSURE AIR BARRIER CONTINUITY BETWEEN THE WINDOW AND THE WALL AIR BARRIER LINE



Drawings are for illustration purpose only - not to scale

IF FORMING THE WALL AIR BARRIER WITH BLOCKWORK INNER LEAF OR WITH SCRATCH COAT ON BLOCKS/WORK, INSTALL A FLEXIBLE SEALANT BETWEEN THE CAVITY CLOSER AND THE BLOCKWORK WALL

GENERAL NOTES

Keep cavities clean of mortar spots and other debris during construction



NSAI

CERT No: IAB/TM/01

Thermal Modelers Scheme

CavityTherm CT/PIR	100mm	125mm	150mm
Psi Value ψ (W/mK)	0.031	0.036	0.028
Temperature Factor (f)	0.952	0.953	0.944
U-Value (W/m ² K)	0.20	0.16	0.13

To be read in conjunction with the Acceptable Construction Details
Any changes to the above construction may change the calculated values